

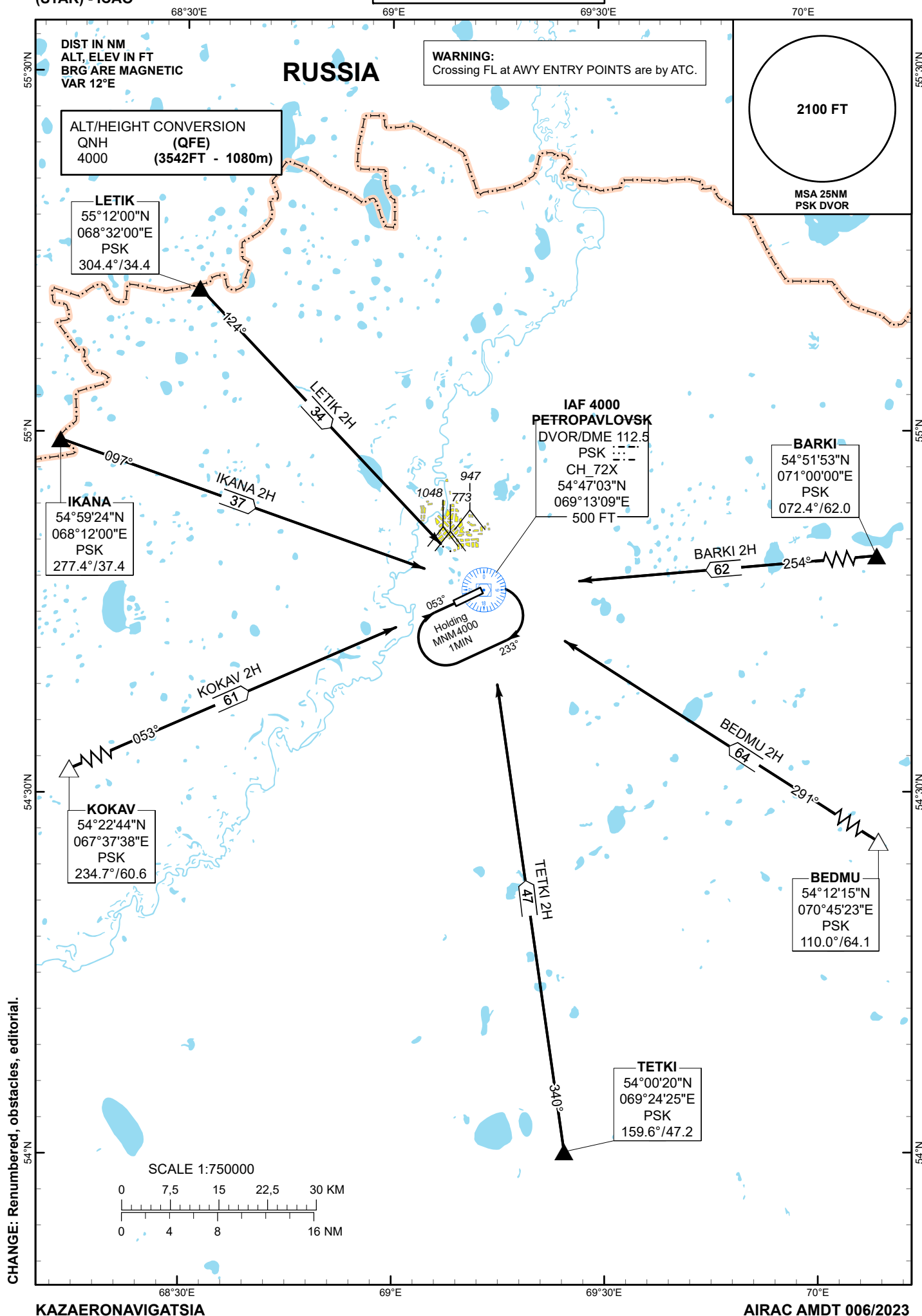
STANDARD ARRIVAL
CHART - INSTRUMENT
(STAR) - ICAO

TRANSITION ALTITUDE
10000 FT

PETROPAVLOVSK TOWER 123.7
PETROPAVLOVSK ATIS (EN) 127.4
PETROPAVLOVSK ATIS (RU) 118.3

BARKI 2H BEDMU 2H
IKANA 2H KOKAV 2H
LETIK 2H TETKI 2H

PETROPAVLOVSK
RWY 23



**STANDARD ARRIVAL ROUTES – INSTRUMENT (STAR)
PETROPAVLOVSK RWY 23**

BARKI 2H

After crossing BARKI (N545153 E0710000), proceed on track 254° to DVOR/DME PSK.
Cross DVOR/DME PSK at 4000 FT.

BEDMU 2H

After crossing BEDMU (N541215 E0704523), proceed on track 291° to DVOR/DME PSK.
Cross DVOR/DME PSK at 4000 FT.

TETKI 2H

After crossing TETKI (N540020 E0692425), proceed on track 340° to DVOR/DME PSK.
Cross DVOR/DME PSK at 4000 FT.

KOKAV 2H

After crossing KOKAV (N542244 E0673738), proceed on track 053° to DVOR/DME PSK.
Cross DVOR/DME PSK at 4000 FT.

IKANA 2H

After crossing IKANA (N545924 E0681200), proceed on track 097° to DVOR/DME PSK.
Cross DVOR/DME PSK at 4000 FT.

LETIK 2H

After crossing LETIK (N551200 E0683200), proceed on track 124° to DVOR/DME PSK.
Cross DVOR/DME PSK at 4000 FT.